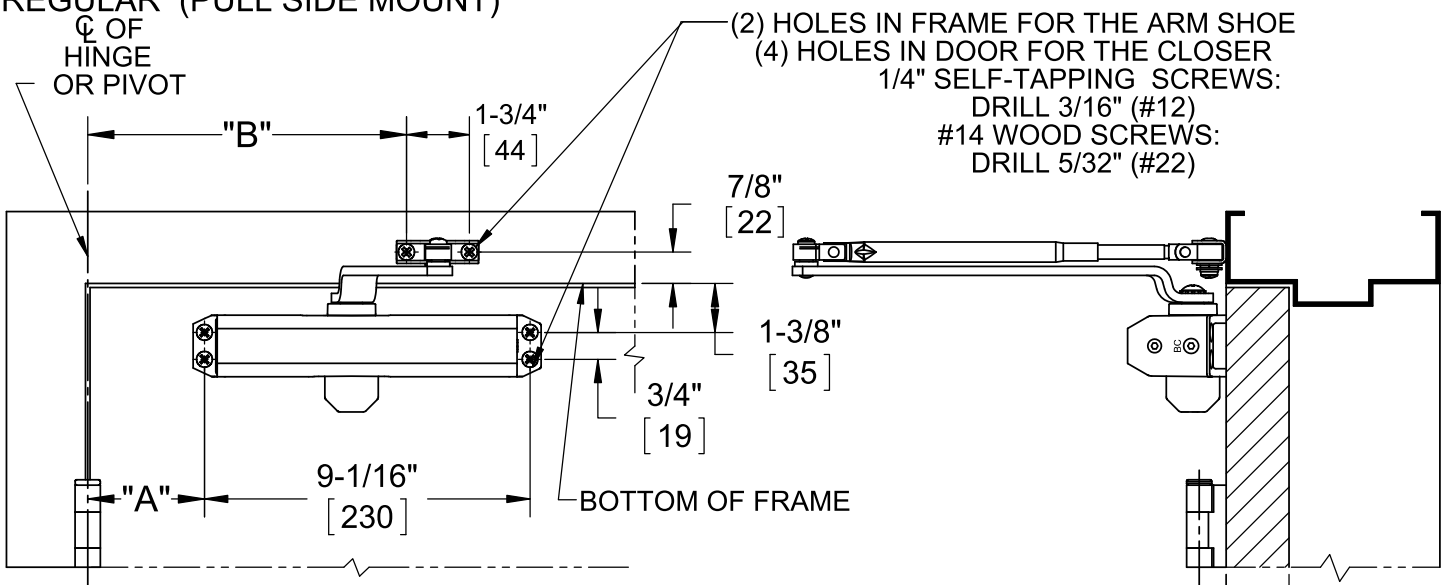


CLSC15 DOOR CLOSER

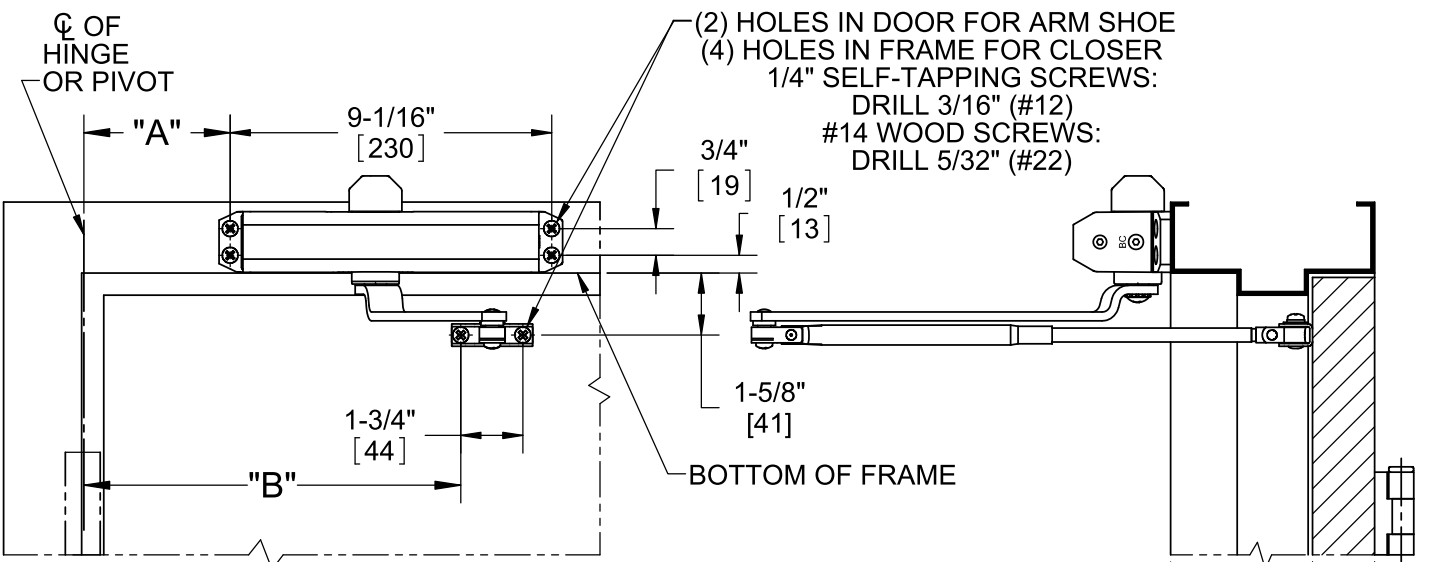
REGULAR (PULL SIDE MOUNT)



ANGLE OF DOOR OPENING	DIM "A" CLOSER	DIM "B" ARM SHOE
TO 100 DEG	7" [178]	13" [330]
100 TO 120 DEG	6" [152]	12" [305]
OVER 120 DEG	3-1/2" [89]	9-1/2" [241]

- NOTES:
- 1) DO NOT SCALE THIS DRAWING
 - 2) DIMENSIONS ARE IN INCHES / [MM]
 - 3) RIGHT HAND DOOR AS SHOWN LEFT HAND DOOR OPPOSITE
 - 4) MAX DOOR WIDTH SEE INSTRUCTIONS
 - 5) MAX. OPENING 180 DEG.
 - 6) TEMPLATE FOR 4-1/2" X 4-1/2" BUTT HINGE OR 3/4" OFFSET PIVOT

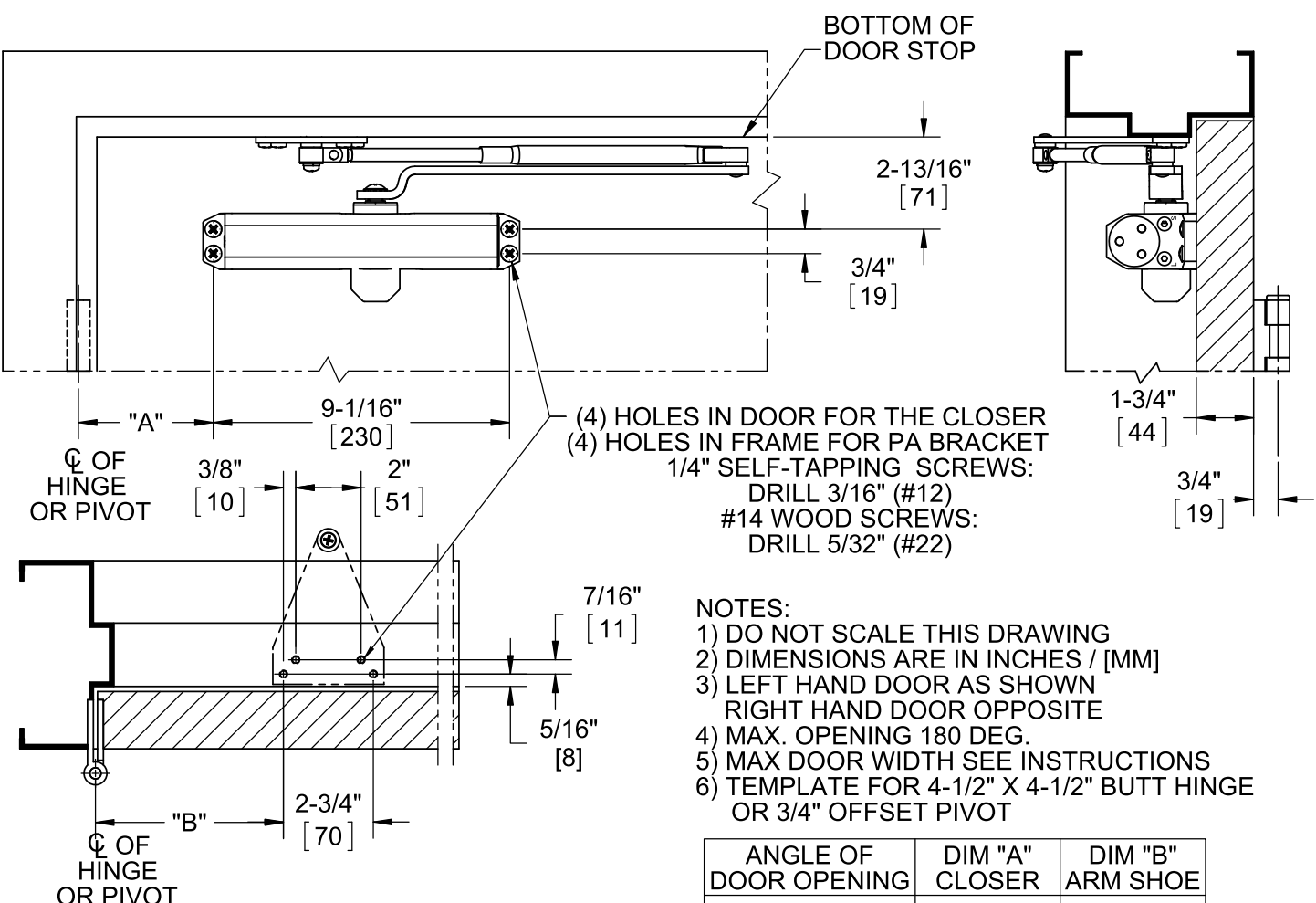
TOP JAMB (PUSH SIDE MOUNT)



ANGLE OF DOOR OPENING	DIM "A" CLOSER	DIM "B" ARM SHOE
TO 100 DEG	7-1/2" [191]	13-1/2" [343]
100 TO 120 DEG	6 [148]	12" [305]
OVER 120 DEG	3-1/2" [89]	9-1/2" [241]

- NOTES:
- 1) DO NOT SCALE THIS DRAWING
 - 2) DIMENSIONS ARE IN INCHES / [MM]
 - 3) LEFT HAND DOOR AS SHOWN RIGHT HAND DOOR IS OPPOSITE
 - 4) MAX. OPENING 180 DEG.
 - 5) MAX. DOOR WIDTH SEE INSTRUCTIONS
 - 6) TEMPLATE FOR 4-1/2" X 4-1/2" BUTT HINGE OR 3/4" OFFSET PIVOT

PARALLEL ARM (PUSH SIDE MOUNT)



- NOTES:
- 1) DO NOT SCALE THIS DRAWING
 - 2) DIMENSIONS ARE IN INCHES / [MM]
 - 3) LEFT HAND DOOR AS SHOWN RIGHT HAND DOOR OPPOSITE
 - 4) MAX. OPENING 180 DEG.
 - 5) MAX DOOR WIDTH SEE INSTRUCTIONS
 - 6) TEMPLATE FOR 4-1/2" X 4-1/2" BUTT HINGE OR 3/4" OFFSET PIVOT

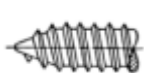
ANGLE OF DOOR OPENING	DIM "A" CLOSER	DIM "B" ARM SHOE
TO 100 DEG	7-5/8" [194]	9-1/4" [235]
100 TO 130 DEG	6-1/8" [156]	7-3/4" [197]
OVER 130 DEG	4-1/8" [105]	5-3/4" [146]

METAL - FASTENER



1/4" SELF-THREADING SCREW
DRILL 3/16" (#12)

WOOD - FASTENER



#4 WOOD SCREW
DRILL 5/32" (#22)