

## Model XT/PX/LX

**Note: Install handles and/or cylinders prior to applying the leading edge seal !**

### Tools Required:

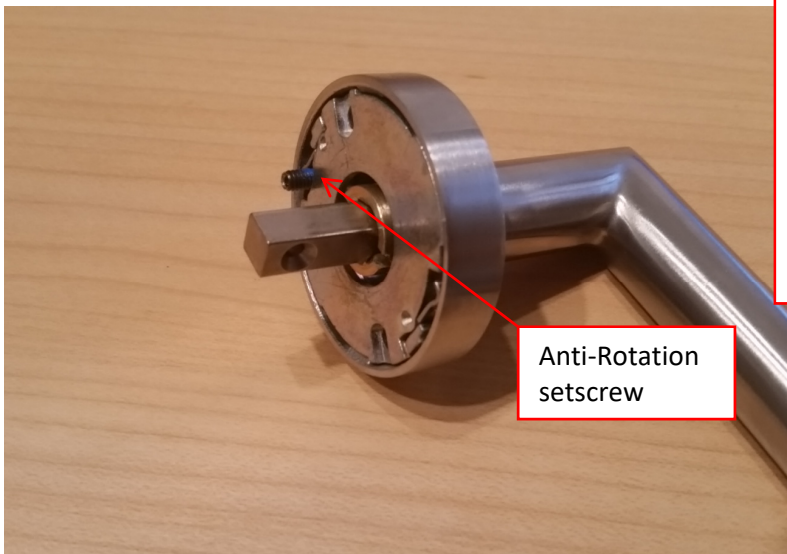
- #2 Phillips Screwdriver
- Flat Blade Screwdriver
- 1/8" Allen Wrench approximately 4" in length

## Step 1 – Remove Door Edge



Remove the door edge by loosening all screws along the vertical edge. The screw arrangement varies depending on the door edge configuration.

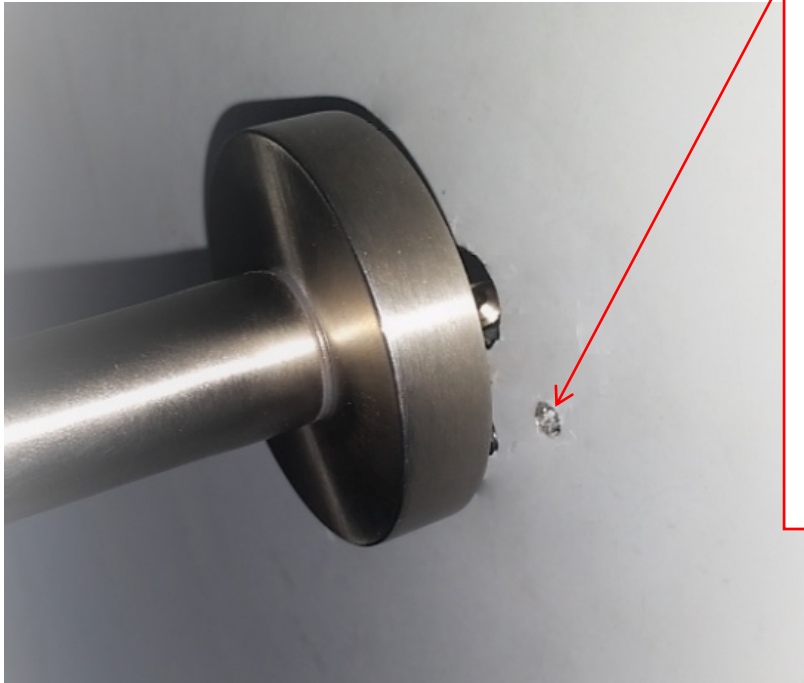
## Step 2 – Handle Configuration



Each handle set is pre-assembled as shown. The protruding setscrew mates with a corresponding hole in the door face to prevent the rose from rotating once installed.

Anti-Rotation setscrew

### Step 3 – Handle Installation



Trip the latch trigger at the top of the door to extend the top latch.

Fully insert the handle shaft into the lock case hub. Ensure that the anti-rotation setscrew aligns with the corresponding hole in the door face.

For dual lever models, install secondary lever at this time.

### Step 4 – Securing the Handle



There are two openings in the lock mounting plate in line with the horizontal handle location. Only tighten the setscrew adjacent to the handle being installed.

Secure the handle(s) by passing the 1/8" Allen Wrench through the lock mounting plate to access the handle setscrew. Tighten securely (Not just snug!), and reinstall door edge.